

TYC LIGHTING PRODUCTS

MAY-2011



All electric leveling headlamps are suited with a leveling motor to electronically control the height of the light beam. Leveling motors are delicate motors that could break, are affected by weather and long time usage. TYC introduces a collection of leveling motors that can be fitted on TYC headlamps and their OE counterparts. These motors have the same level of quality as OE but have definitely cost saving advantages. During 2010/2011 TYC introduced new motors, this is the total overview. Ask your sales contact for more information and order possibilities.

Leveling motor (VW/Skoda)

Product information:

A3 (8P1)/ A6 (4F2/4F5) / A8 (4D2/4D8) / Octavia (1U2/1U5) / Daily II / Passat (362/365)
Halogen applications



Leveling motor (VAG HID)

Product information:

A3 (8P1)/ A6 (4F2/4F5) / A8 (4D2/4D8) / Golf V (1K1/1K5) / Touran (1T1/1T2/1T3)
HID applications



TYC:

20-5319-MA-1

OE:

1J0941295A/
42536208

TYC:

20-11257-MA-1

OE:

4B0941293A

Leveling motor (BMW)

Product information:

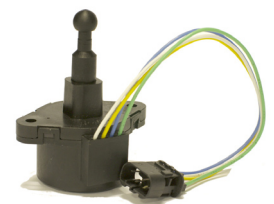
BMW 1 series (E81/87) / 3 series (SDN/WGN) (E90/E91) / 5 (F10/F11) / X6 (E71)
Halogen/HID



Leveling motor (BMW)

Product information:

3 series (CPE/CONV) (E46) / 3 series (HB/SDN/WGN) (E46) / 5 series (E39) / Z4 (E85/E86)
Halogen



TYC:

20-0655-MA-1

OE:

63116938563

TYC:

20-0011-MA-1

OE:

67168372381

TYC Europe BV
Rondebeltweg 92
1329 BG Almere
The Netherlands

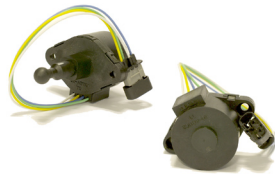
Tel: +31365307188
Fax: +31365307180
E-mail: info@tyceurope.com

www.tyceurope.com

Leveling motor (BMW)

Product information:

3 series (HB/SDN/WGN) (E46)
/ 5 series (E39) / 7 series (E38)/
7 series (E65/ E66) / X5 (E53)
Halogen/HID



TYC:

20-0321-MA-1

OE:

67168352206

Leveling motor (CT/PG/TY)

Product information:

Berlingo (M/MF) / Jumpy (U6U) /
107 / 406 (8B/8E/8F)
206 (2A/2C/2E/2K) / Aygo (B10)
Halogen



TYC:

20-11607-MA-1

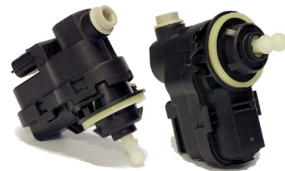
OE:

6224C0 / 9632162280

Leveling motor (RN/NS/OP)

Product information:

Vivaro (E7/F7/J7) / Clio III /
Kangoo II / Trafic (EL/FL/JL) /
Modus (F/JP) Auris
Halogen



TYC:

20-0795-MA-1

OE:

8200402521 443359
2605600Q0A

Leveling motor (CT/FT/PG)

Product information:

Jumpy / Scudo / Expert (VF3)
2007-ON
Halogen



TYC:

20-1219-MA-1

OE:

n/a

Leveling motor (CT C1)

Product information:

Citroen C1 2005-ON



TYC:

20-11605-MA-1

OE:

n/a

Leveling motor (Transit)

Product information:

Ford Transit (TT9) 2006-ON



TYC:

20-11735-MA-1

OE:

1435867

Leveling motor (HD/MZ)

Product information:

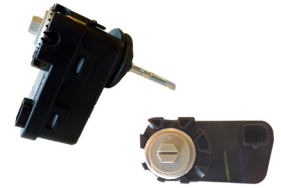
Accord VIII (CL/CM) / Civic VIII (FD) / CRV II (RD) / CR-V III / FR-V (BE) / Jazz (GE) / MZ 2 / MZ 5 (CR19)



Leveling motor (HY/KIA)

Product information:

i30 07-ON / ix35 / ix55 / Santa Fé (CM) / Sonata V (NF) / Cee'd / Pro Cee'd / Sorento (JC) Halogen



TYC:

OE:

TYC:

OE:

20-11761-MA-1

33130SJKJ01

20-11781-MA-1

921302B000 /
921303K000

Leveling motor (Kia)

Product information:

Cee'd / Pro Cee'd 2007-2009
Halogen



Leveling motor (MZ/TY)

Product information:

MZ 3 (BL) / 6 (GH) / Pixo (UA0) / Alto V (GF) / SX4 (GY) / Aven-
sis (T25) / Prius / RAV4 II (XA2)
Halogen



TYC:

OE:

TYC:

OE:

20-11855-MA-1

n/a

20-0515-MA-1

8566122020

Leveling motor (BZ/VW)

Product information:

Sprinter (906) / Crafter 30-50 (2E)



Leveling motor (BZ)

Product information:

Mercedes-Benz E-Class (W211/
S211) / M-Class (W163) / M-
Class (W164)
Halogen



TYC:

OE:

TYC:

OE:

20-11813-MA-1

A0008292001 /
1K6941295

20-0625-MA-1

n/a

Leveling motor (Nissan)

Product information:

Nissan Almera II (N16) / Navara (D40) / Pathfinder (R51) / Primera (P12/WP12) / Qashqai (J10/JJ10)
Halogen



Leveling motor (TY/NS)

Product information:

NS Micra (K12) / TY Celica (ZZT23) / RAV4 III (ACA/ACE) / Yaris 05-ON
Halogen



TYC:

20-11571-MA-1

OE:

26056BN702 /
26056AU300

TYC:

20-1027-MA-1

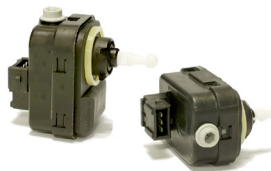
OE:

8566152010

Leveling motor (Nissan)

Product information:

Nissan Note 06-09 / Note 09-ON



Leveling motor (OP)

Product information:

Opel Combo 2000-ON /
Corsa C 2000-2006

V-type



TYC:

20-1039-MA-1

OE:

n/a

TYC:

20-6065-MA-1

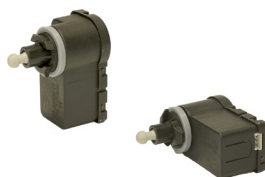
OE:

1207525

Leveling motor (OP/ST)

Product information:

OP Corsa D / Signum / Vectra C 02-05 / ST Altea (5P1) / Altea XL (5P5) / Leon (1P1) / Toledo III
Halogen only



Leveling motor (OP)

Product information:

Opel Combo 2000-ON /
Corsa C 2000-2006

ZK-type



TYC:

20-1041-MA-1

OE:

1207203 /1207936 /
5P0941295

TYC:

20-0423-MA-1

OE:

6207115

Leveling motor (OP/CR)

Product information:

Opel Astra G 1998-2005 / CR PT
Cruiser (PT) 2000-2010

Halogen



Leveling motor (PG)

Product information:

PG 307 (3A/3C/3E/3H) 2000-2005

Halogen only



TYC:

20-5487-MA-1

OE:

6207044 / 5288904AB

TYC:

20-0165-MA-1

OE:

6224E3

Leveling motor (RN)

Product information:

Renault Scenic II (JM) 2006-ON /
Twingo (CN0) 2007-ON

Halogen



Leveling motor (RN HID)

Product information:

RN Clio III (BR/CR) / Espace
IV (JK) / Laguna II (BG/KG) /
Megane II / Vel Satis (BJ0)
HID



TYC:

20-1067-MA-1

OE:

8200501939

TYC:

20-0797-MA-1

OE:

8200261818

Leveling motor (VV)

Product information:

Volvo S60 00-04 / V70 II (P80)
00-04 / XC-70 00-04 /
XC90 02-06
Halogen



Leveling motor (VV)

Product information:

Volvo S60 04-07 / V70 II (P80)
04-07 / XC-70 04-07 /
XC90 06-ON
Halogen



TYC:

20-0435-MA-1

OE:

9178539

TYC:

20-11035-MA-1

OE:

30678861